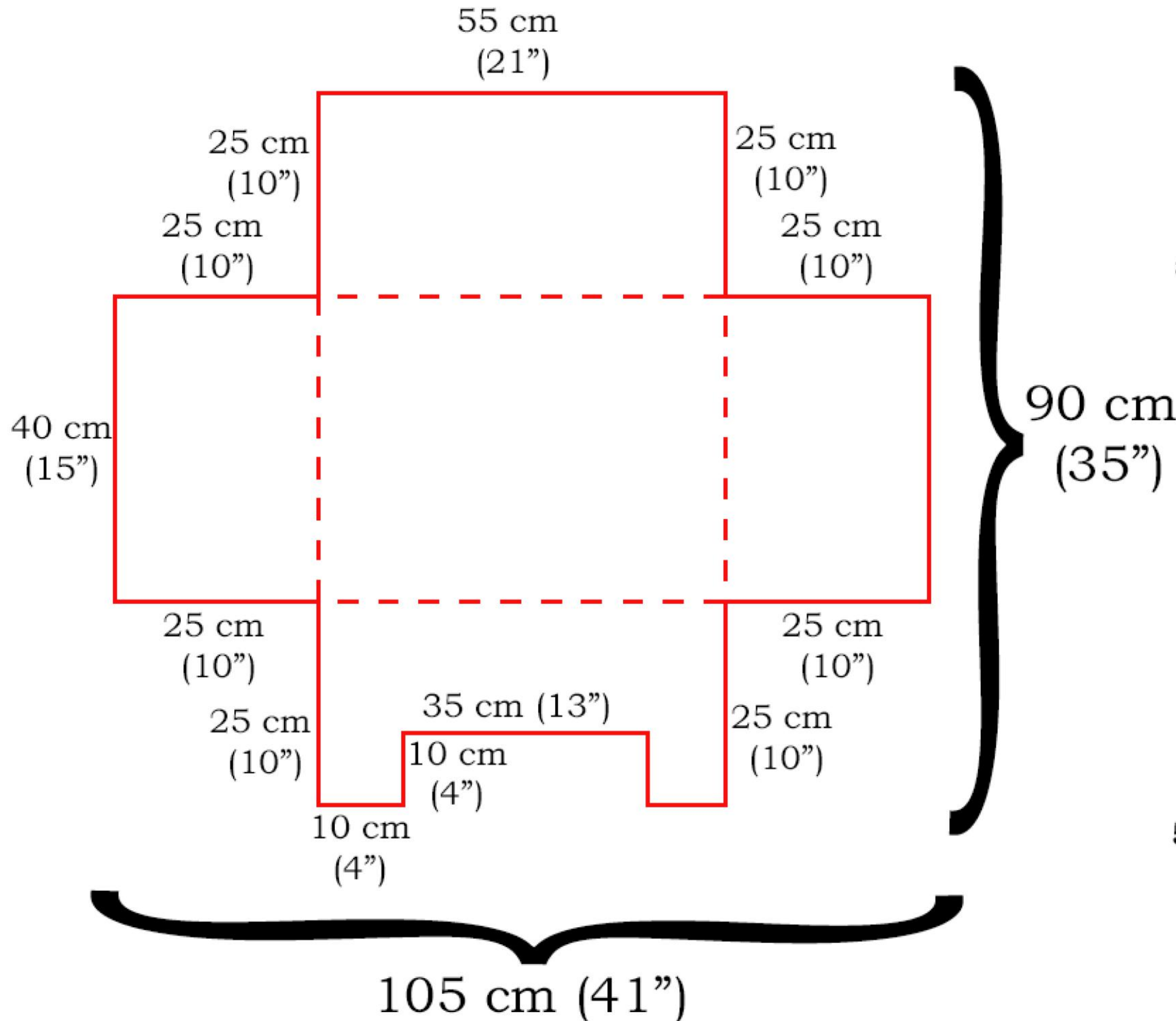


# DIY CAT OR DOG BED



1. Cut out two pieces of flannelette as per the diagram. (Do not cut dotted line)
2. Pin right sides together, and stitch along outside edges, leaving an opening of at least ~4" along the front edge for stuffing later.
3. Turn inside out. Fill sides with stuffing one by one, stitching along dotted lines after each to enclose. (See blog photos for example)
4. Once 3 sides are stuffed, add stuffing to bottom. Stitch along remaining edge to enclose.
5. Stuff remaining side, and blind-stitch opening closed.
6. Hand-stitch sides together upright.

